



Estd. 1954

প্ৰাগজ্যোতিষ মহাবিদ্যালয়

PRAGJYOTISH COLLEGE

**Affiliated to Gauhati University and
Recognized under Sections 2(f) and 12(B) of the U.G.C. Act, 1956**

Annual Quality Assurance Report (AQAR) 2022-2023

CRITERIA 4.1.1

AVAILABILITY OF ADEQUATE INFRASTRUCTURES

Submitted to



THE NATIONAL ASSESSMENT AND ACCREDITATION COUNCIL



PRAGJYOTISH COLLEGE

(Affiliated to Gauhati University and recognized under Sections 2(f) and 12(B) of the U.G.C. Act, 1956)

Santipur, Guwahati – 781009, Assam

E-mail: principal@pragjyotishcollege.ac.in Website: www.pragjyotishcollege.ac.in

CLASSROOMS



LCD ENABLED CLASSROOM



SMART CLASSROOM

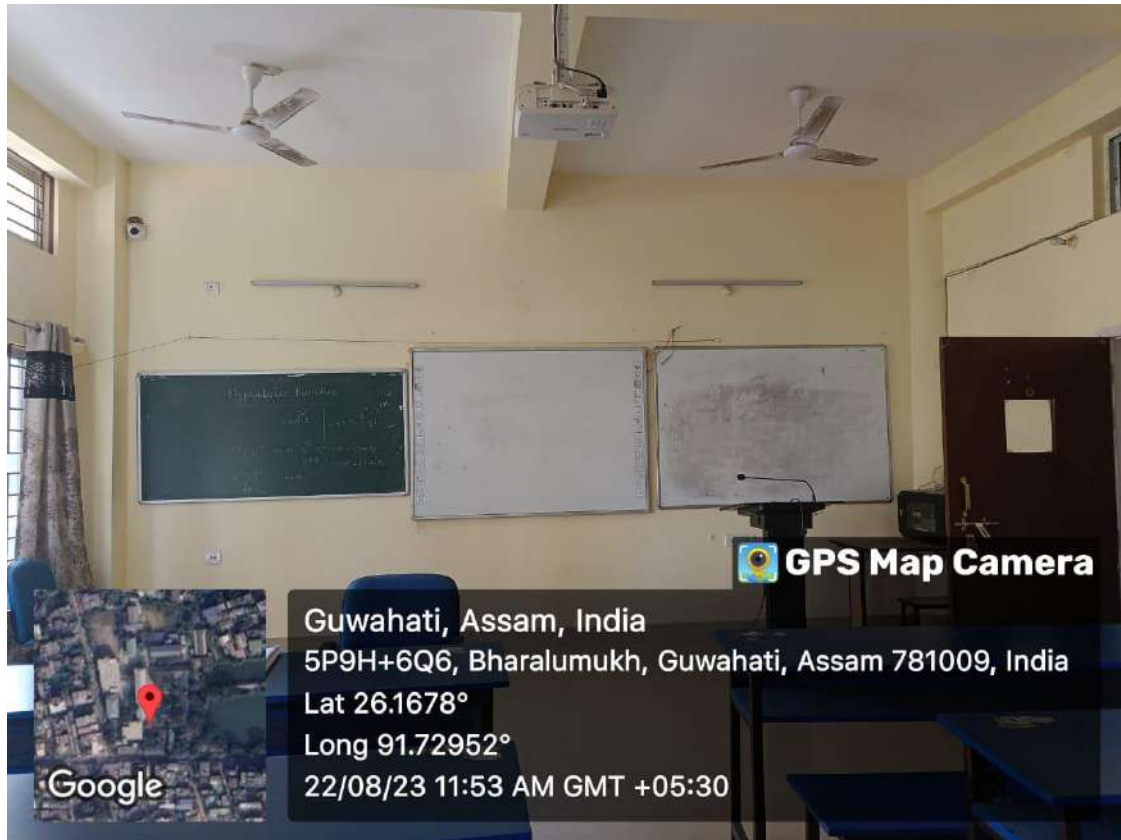


PRAGJYOTISH COLLEGE

(Affiliated to Gauhati University and recognized under Sections 2(f) and 12(B) of the U.G.C. Act, 1956)

Santipur, Guwahati – 781009, Assam

E-mail: principal@pragjyotishcollege.ac.in Website: www.pragjyotishcollege.ac.in



SMART CLASSROOM



ICT ENABLED CLASSROOM



PRAGJYOTISH COLLEGE

(Affiliated to Gauhati University and recognized under Sections 2(f) and 12(B) of the U.G.C. Act, 1956)

Santipur, Guwahati – 781009, Assam

E-mail: principal@pragjyotishcollege.ac.in Website: www.pragjyotishcollege.ac.in



GENERAL CLASSROOM



GENERAL CLASSROOM



PRAGJYOTISH COLLEGE

(Affiliated to Gauhati University and recognized under Sections 2(f) and 12(B) of the U.G.C. Act, 1956)

Santipur, Guwahati – 781009, Assam

E-mail: principal@pragjyotishcollege.ac.in Website: www.pragjyotishcollege.ac.in

SEMINAR HALL/CONFERENCE HALL



CONFERENCE HALL



CONFERENCE HALL



PRAGJYOTISH COLLEGE

(Affiliated to Gauhati University and recognized under Sections 2(f) and 12(B) of the U.G.C. Act, 1956)

Santipur, Guwahati – 781009, Assam

E-mail: principal@pragjyotishcollege.ac.in Website: www.pragjyotishcollege.ac.in



SEMINAR HALL



SEMINAR HALL

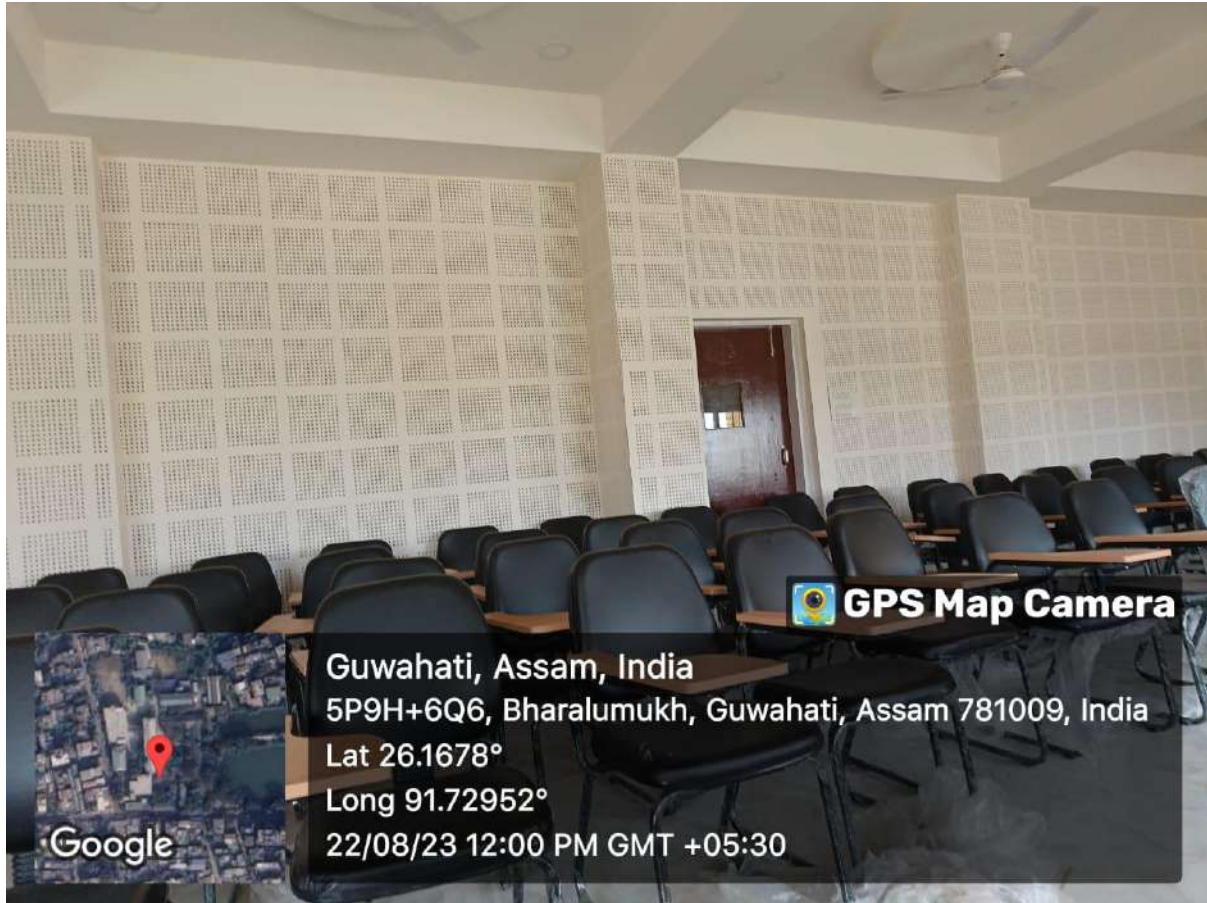


PRAGJYOTISH COLLEGE

(Affiliated to Gauhati University and recognized under Sections 2(f) and 12(B) of the U.G.C. Act, 1956)

Santipur, Guwahati – 781009, Assam

E-mail: principal@pragjyotishcollege.ac.in Website: www.pragjyotishcollege.ac.in



SEMINAR HALL



PRAGJYOTISH COLLEGE

(Affiliated to Gauhati University and recognized under Sections 2(f) and 12(B) of the U.G.C. Act, 1956)

Santipur, Guwahati – 781009, Assam

E-mail: principal@pragjyotishcollege.ac.in Website: www.pragjyotishcollege.ac.in

LABORATORIES



COMPUTER LABORATORY(PHYSICS DEPARTMENT)



CHEMISTRY LABORATORY

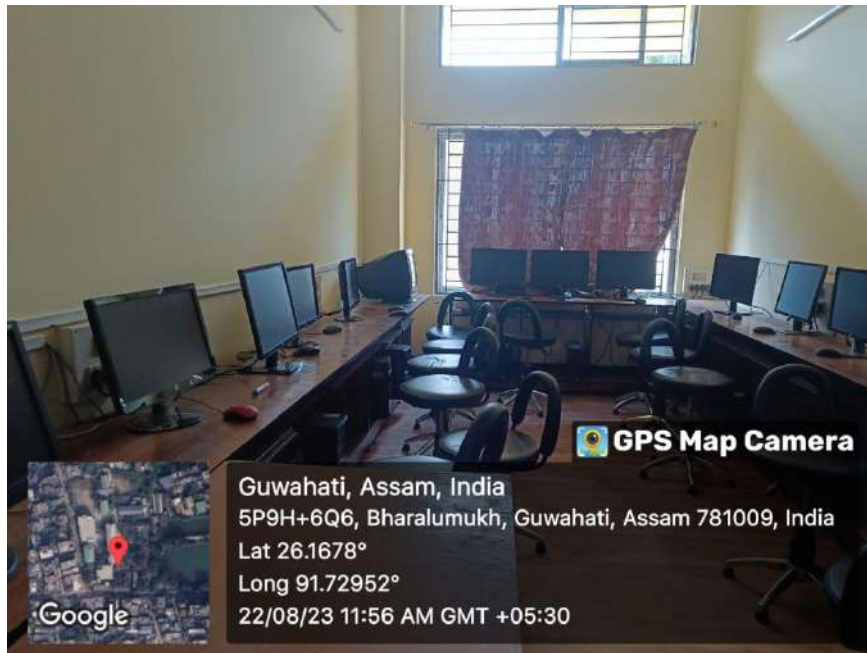


PRAGJYOTISH COLLEGE

(Affiliated to Gauhati University and recognized under Sections 2(f) and 12(B) of the U.G.C. Act, 1956)

Santipur, Guwahati – 781009, Assam

E-mail: principal@pragjyotishcollege.ac.in Website: www.pragjyotishcollege.ac.in



COMPUTER LABORATORY (MATHEMATICS & STATISTICS DEPARTMENT)



PHYSICS LABORATORY



PRAGJYOTISH COLLEGE

(Affiliated to Gauhati University and recognized under Sections 2(f) and 12(B) of the U.G.C. Act, 1956)

Santipur, Guwahati – 781009, Assam

E-mail: principal@pragjyotishcollege.ac.in Website: www.pragjyotishcollege.ac.in



ADVANCED RESEARCH LABORATORY (CHEMISTRY DEPARTMENT)



CHEMISTRY LABORATORY



PRAGJYOTISH COLLEGE

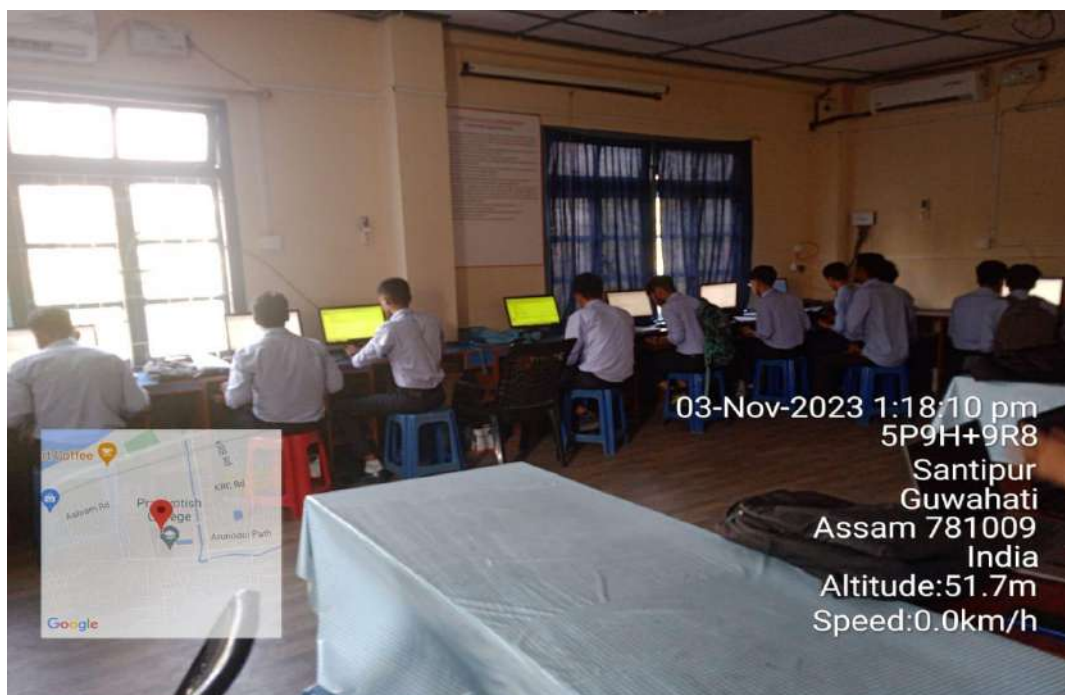
(Affiliated to Gauhati University and recognized under Sections 2(f) and 12(B) of the U.G.C. Act, 1956)

Santipur, Guwahati – 781009, Assam

E-mail: principal@pragjyotishcollege.ac.in Website: www.pragjyotishcollege.ac.in



GIS LABORATORY OF GEOGRAPHY DEPARTMENT



COMPUTER LABORATORY, COMPUTER SCIENCE DEPARTMENT



PRAGJYOTISH COLLEGE

(Affiliated to Gauhati University and recognized under Sections 2(f) and 12(B) of the U.G.C. Act, 1956)

Santipur, Guwahati – 781009, Assam

E-mail: principal@pragjyotishcollege.ac.in Website: www.pragjyotishcollege.ac.in



LABORATORY, BOTANY DEPARTMENT



TISSUE CULTURE LAB, BOTANY DEPARTMENT



PRAGJYOTISH COLLEGE

(Affiliated to Gauhati University and recognized under Sections 2(f) and 12(B) of the U.G.C. Act, 1956)

Santipur, Guwahati – 781009, Assam

E-mail: principal@pragjyotishcollege.ac.in Website: www.pragjyotishcollege.ac.in



LANGUAGE LAB, ENGLISH DEPARTMENT



PRAGJYOTISH COLLEGE

(Affiliated to Gauhati University and recognized under Sections 2(f) and 12(B) of the U.G.C. Act, 1956)

Santipur, Guwahati – 781009, Assam

E-mail: principal@pragjyotishcollege.ac.in Website: www.pragjyotishcollege.ac.in



UV-Visible Spectrophotometer, Chemistry Department



Digital Muffle Furnace, Chemistry Department



PRAGJYOTISH COLLEGE

(Affiliated to Gauhati University and recognized under Sections 2(f) and 12(B) of the U.G.C. Act, 1956)

Santipur, Guwahati – 781009, Assam

E-mail: principal@pragjyotishcollege.ac.in Website: www.pragjyotishcollege.ac.in



Laminar Airflow, Zoology Department



Microscopes, Zoology Department



PRAGJYOTISH COLLEGE

(Affiliated to Gauhati University and recognized under Sections 2(f) and 12(B) of the U.G.C. Act, 1956)

Santipur, Guwahati – 781009, Assam

E-mail: principal@pragjyotishcollege.ac.in Website: www.pragjyotishcollege.ac.in



Incubator, Botany Department



Autoclave, Botany Department



PRAGJYOTISH COLLEGE

(Affiliated to Gauhati University and recognized under Sections 2(f) and 12(B) of the U.G.C. Act, 1956)

Santipur, Guwahati – 781009, Assam

E-mail: principal@pragjyotishcollege.ac.in Website: www.pragjyotishcollege.ac.in

DEPARTMENTAL MUSEUM



Latitude: 26.167534
Longitude: 91.729079
Elevation: 77.39±2 m
Accuracy: 14.0 m

MUSEUM OF ZOOLOGY DEPARTMENT



5P9H+3VH, Pragjyotish Path, Santipur, Guwahati, Assam 781009, India

Latitude
26.1675621°
Local 03:43:22 PM

Longitude
91.729802°
Altitude 53 meters

MUSEUM OF GEOLOGY DEPARTMENT



PRAGJYOTISH COLLEGE

(Affiliated to Gauhati University and recognized under Sections 2(f) and 12(B) of the U.G.C. Act, 1956)

Santipur, Guwahati – 781009, Assam

E-mail: principal@pragjyotishcollege.ac.in Website: www.pragjyotishcollege.ac.in



MUSEUM OF GEOLOGY DEPARTMENT



MUSEUM OF ANTHROPOLOGY DEPARTMENT



PRAGJYOTISH COLLEGE

(Affiliated to Gauhati University and recognized under Sections 2(f) and 12(B) of the U.G.C. Act, 1956)

Santipur, Guwahati – 781009, Assam

E-mail: principal@pragjyotishcollege.ac.in Website: www.pragjyotishcollege.ac.in



MUSEUM OF ANTHROPOLOGY DEPARTMENT



PRAGJYOTISH COLLEGE

(Affiliated to Gauhati University and recognized under Sections 2(f) and 12(B) of the U.G.C. Act, 1956)

Santipur, Guwahati – 781009, Assam

E-mail: principal@pragjyotishcollege.ac.in Website: www.pragjyotishcollege.ac.in



MUSEUM OF BOTANY DEPARTMENT



PRAGJYOTISH COLLEGE

(Affiliated to Gauhati University and recognized under Sections 2(f) and 12(B) of the U.G.C. Act, 1956)

Santipur, Guwahati – 781009, Assam

E-mail: principal@pragjyotishcollege.ac.in Website: www.pragjyotishcollege.ac.in

OTHER FACILITIES



DEPARTMENTAL LIBRARY



TEACHERS' COMMON ROOM

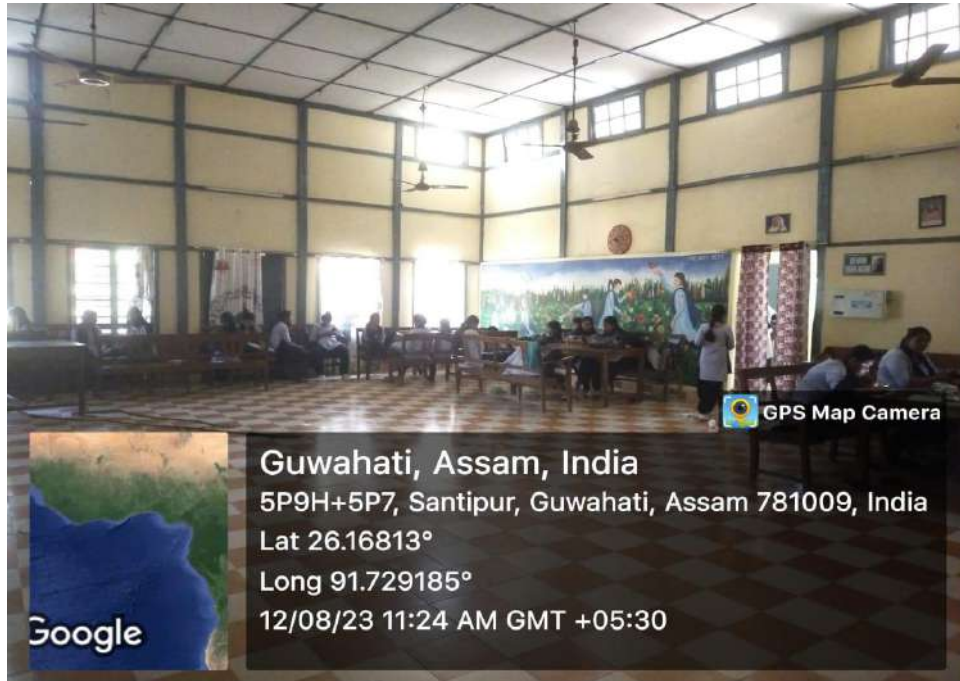


PRAGJYOTISH COLLEGE

(Affiliated to Gauhati University and recognized under Sections 2(f) and 12(B) of the U.G.C. Act, 1956)

Santipur, Guwahati – 781009, Assam

E-mail: principal@pragjyotishcollege.ac.in Website: www.pragjyotishcollege.ac.in



GIRLS' COMMON ROOM



BOYS' COMMON ROOM

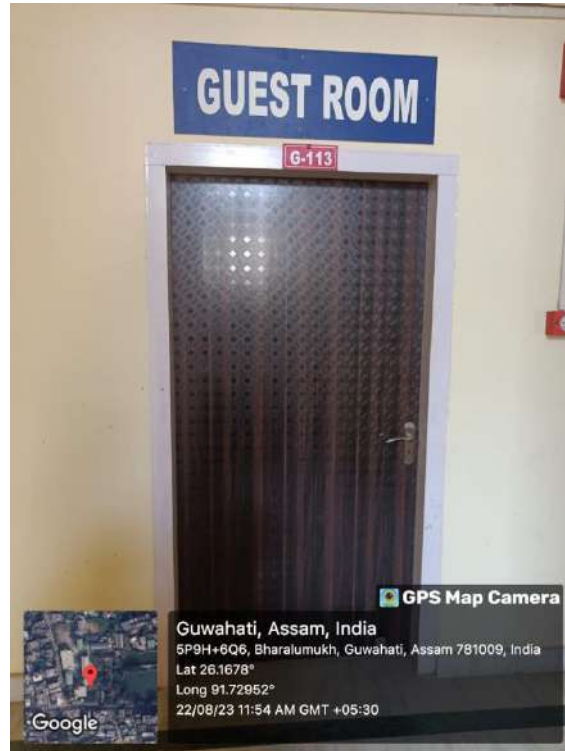


PRAGJYOTISH COLLEGE

(Affiliated to Gauhati University and recognized under Sections 2(f) and 12(B) of the U.G.C. Act, 1956)

Santipur, Guwahati – 781009, Assam

E-mail: principal@pragjyotishcollege.ac.in Website: www.pragjyotishcollege.ac.in



GUEST ROOM

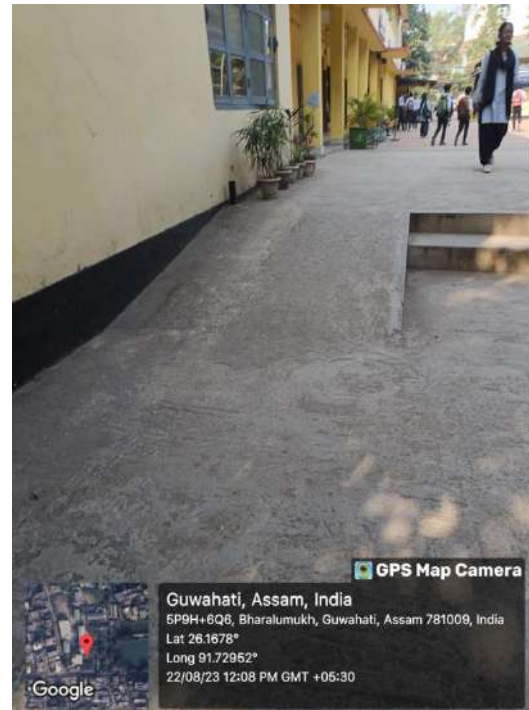
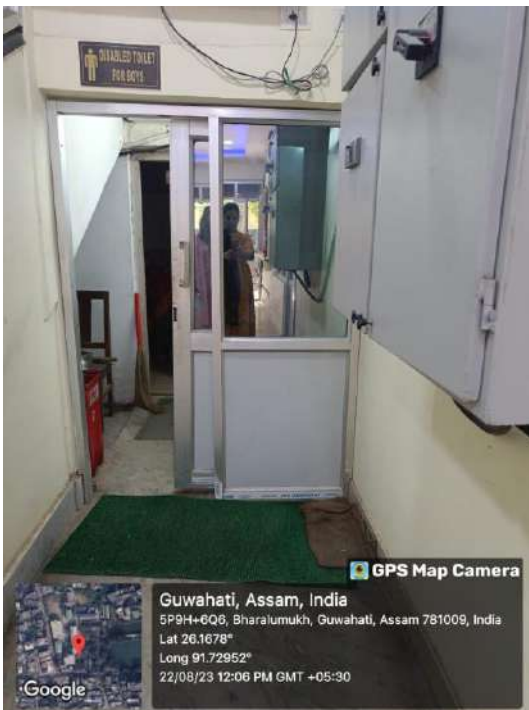


PRAGJYOTISH COLLEGE

(Affiliated to Gauhati University and recognized under Sections 2(f) and 12(B) of the U.G.C. Act, 1956)

Santipur, Guwahati – 781009, Assam

E-mail: principal@pragjyotishcollege.ac.in Website: www.pragjyotishcollege.ac.in



SUPPORTS FOR STUDENTS WITH DISABILITIES